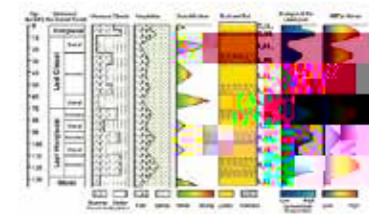
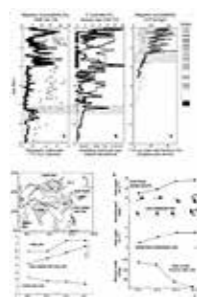


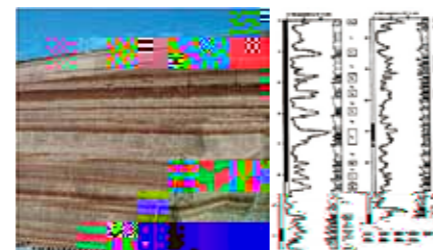
In his fifty years of cultivation in Earth Science, An Zhisheng broke through the traditional global glacial-interglacial cycle theory by proposing the East Asian monsoon control theory and Asian monsoon evolution dynamics through combined studies of field observation, laboratory analysis and numerical simulation based on the Chinese loess and other bio-geological records. His finding has successfully solved the Asian environmental changes mystery and has been recognized by international scientific community. By pointing out that the current monsoon and arid zones in China are the outcomes of long-term coupling evolution of monsoon-arid environment system, and that ecological rehabilitation should be based on the principle of natural restoration, he has provided with scientific and technological support for the eco-environmental improvement in west China, particularly on Chinese Loess Plateau. He has pioneered the new field of integrated studies of Quaternary geology and global change, and his findings have contributed to the development of Earth System Science and to the policy formulation of the sustainable strategy in China.

主要科技贡献:

50



13



260

