

&KHQ 'DKXD ,QVWLWXWH RI =RRORJ\ &KLQHVH \$FDGHP\ RI 6FLHQFHV

Over the last ten years, the research team led by Professor Dahua Chen has been using Drosophila and mouse as model organisms to study the molecular mechanisms that...

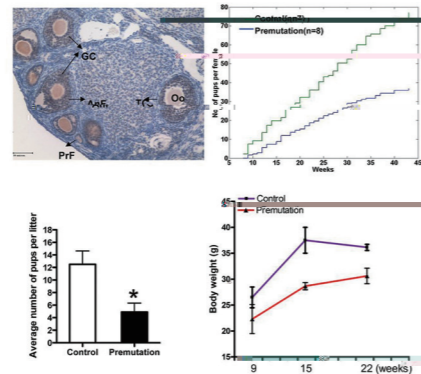
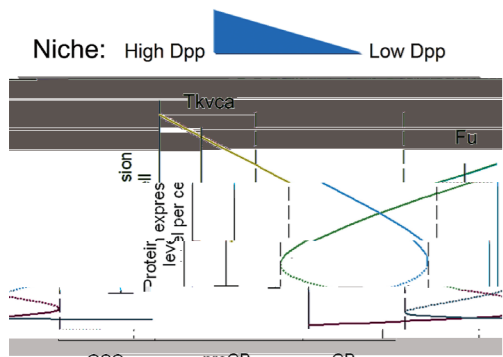


陈大华

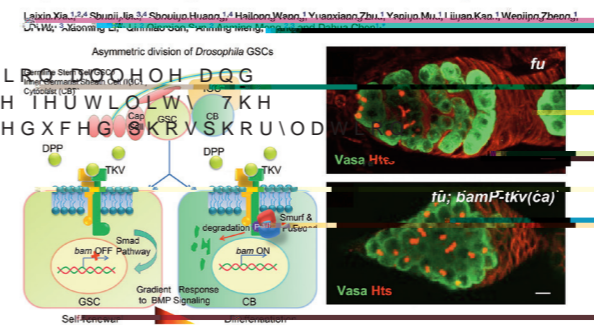
H GHYHORSPHQW... G RI GHYHORSPHQWDO

主要科技贡献

*6 & DQG LWV WKXV IRUPLQJ D... PLQDWRQ RI 6&V U4y° TMÈ 4³Å& f it &... @ãï Ûf... W5M/úíÐT #e ... ñ8 þU Äý 4³Å&...

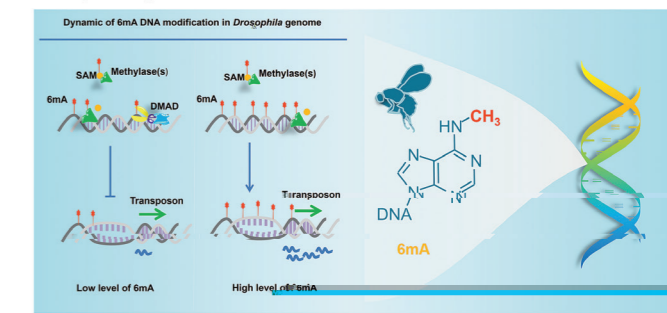


The Fused/Smurf Complex Controls the Fate of Drosophila Germline Stem Cells by Generating a Gradient BMP Response



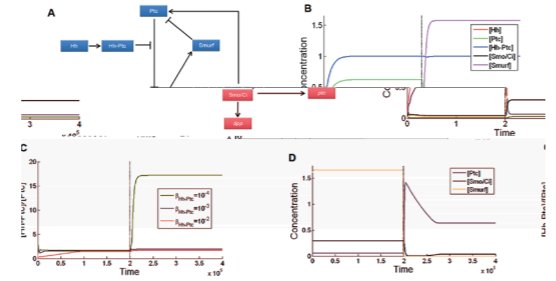
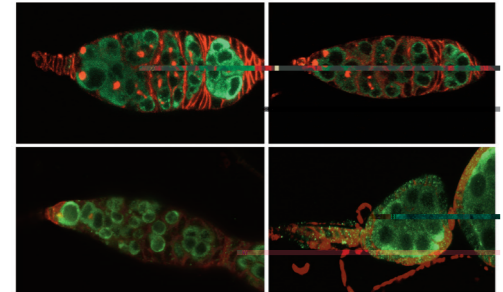
N6-Methyladenine DNA Modification in Drosophila

Guoqiang Zhang, Hua Huang, Di Liu, Ying Cheng, Xiaoling Liu, Wenxin Zhang, Ruichuan Yin, Dapeng Zhang, Peng Zhang, Jianzhao Liu, Chaoyi Li, Baodong Liu, Yuewan Luo, Yuanxiang Zhu, Ning Zhang, Shunmin He, Chuan He, Halin Wang, and Dahua Chen



loop system in controlling the bam transcriptional on/off switch and...

Mathematical models and equations describing stem cell dynamics



Stochastic models and equations for stem cell fate decisions

Mathematical models and equations for DNA modification dynamics

germline stem cells in Drosophila OLNHO\ YLD WKH PL561 \$oSDWKZD\...

50WTH™ ? 1 2VEËË, p*J+8<ù%j _"? !wV3i!-0... Ping-Pong cycle and acts in concert with Zuc to regulate dynamic...

