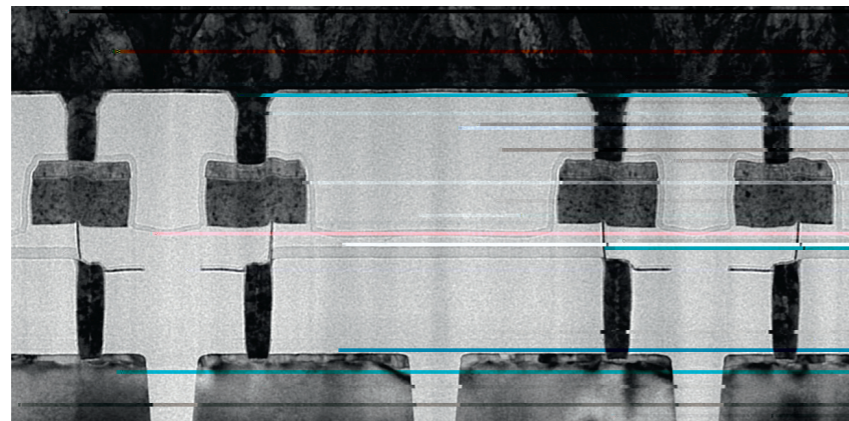
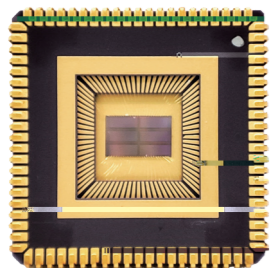
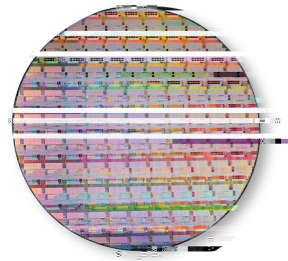


the theory of octahedral unit with three-dimensional confinement, developed Sc-Sb-Te phase change materials featuring picosecond switching and discovered the brand-

have developed 4 to 128Mb PCM chips by collaborating with SMIC, which have been applied to the power grids and microsattellites. They released the first embedded PCM chip in China and the independent intellectual property rights have been granted on materials, devices, integration process, chip design and applications. With the strong support from SIMIT and XINCHU, the group are devoting themselves to the mass production and extensive application of PCM chips, and have laid a solid foundation for



### 相变存储器研究集体

